



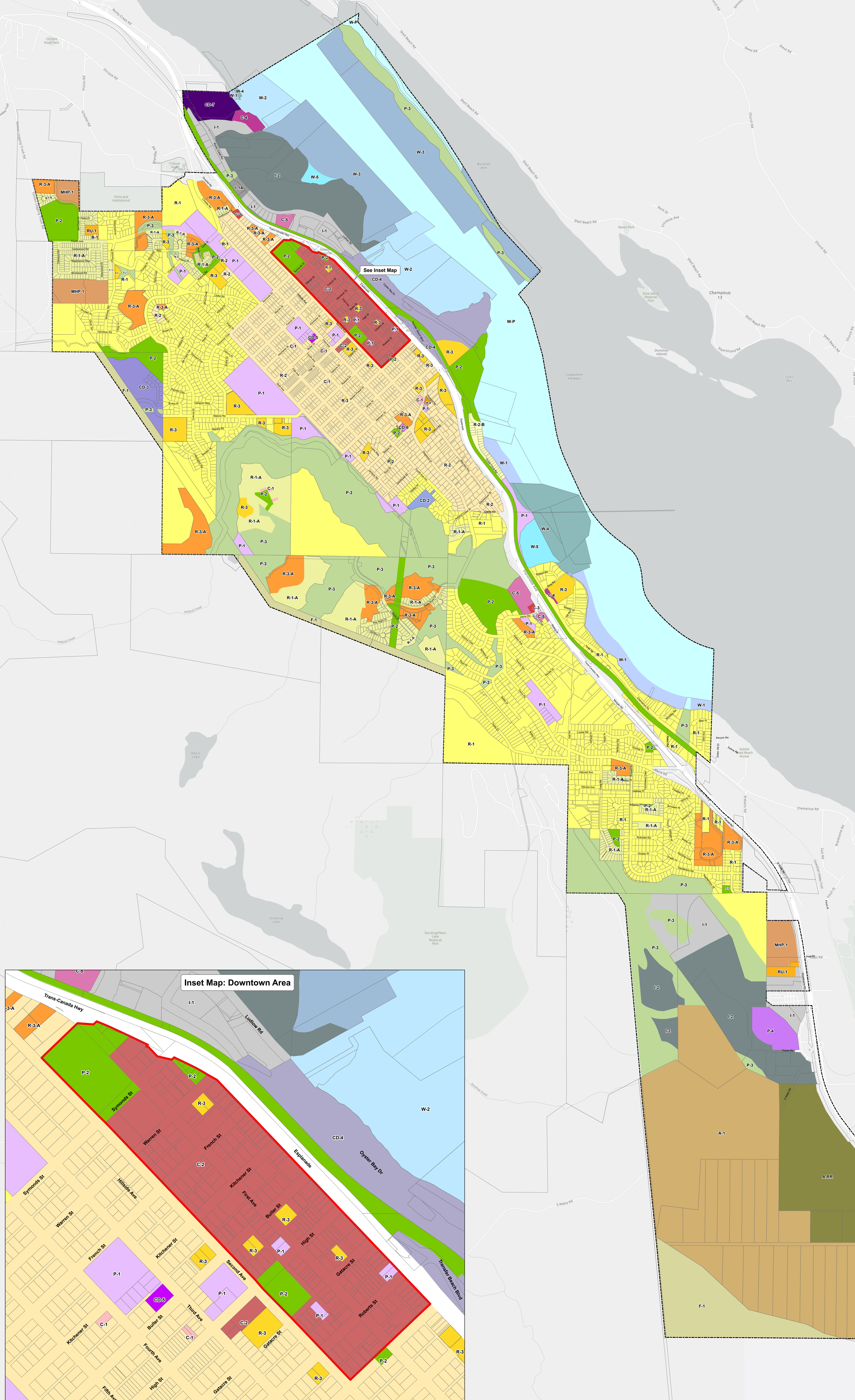
**TOWN OF LADYSMITH**  
**Zoning Bylaw Map**  
**Schedule B to Zoning Bylaw No. 1860**

- RESIDENTIAL ZONES**
- R-1 Single Dwelling Residential
  - R-1-A Single Dwelling Residential - Small Lot A
  - R-2 Old Town Residential
  - R-2-B Oyster Cove Residential
  - R-2-LW Live / Work Residential
  - R-3 Medium Density Residential
  - R-3-A Low Density Residential
  - RU-1 Rural Residential
  - R-4 Multi-Family Mixed-Use
  - MHP-1 Manufactured Home Park
- COMMERCIAL ZONES**
- C-1 Local Commercial
  - C-2 Downtown Commercial
  - C-3 Highway Service Commercial
  - C-4 Tourist Service Commercial
  - C-5 Shopping Centre Commercial
- INDUSTRIAL ZONES**
- I-1 Light Industrial
  - I-1A Live / Work Industrial
  - I-2 Industrial
- INSTITUTIONAL AND PARK ZONES**
- P-1 Institutional
  - P-2 Park and Recreation
  - P-3 Nature Park
  - P-4 Recycling Depot
- AGRICULTURAL ZONES**
- A-1 Primary Agriculture
  - A-RR Agriculture and Resort Recreation
- FORESTRY ZONES**
- F-1 Forestry
- MARINE ZONES**
- W-1 Marine Residential Moorage
  - W-2 Marina
  - W-3 Marine Industrial
  - W-4 Marine Harvesting
  - W-5 Marine Conservation
  - W-P Marine Park and Recreation
- COMPREHENSIVE DEVELOPMENT ZONES**
- CD-1 Tourist Service
  - CD-2 Cluster Residential
  - CD-3 Malone Residential
  - CD-4 Waterfront Reserve
  - CD-5 Community Housing
  - CD-6 Belaire Mixed-Use
  - CD-7 Rocky Creek Road Mixed-Use Residential

Date of Adoption: August 18, 2014

Zoning Revisions					
Amendment Bylaws					
1904	1953	1985	2124		
1912	1955	2063	2113		
1914	1961	2061	2107		
1917	1966	2088	2163		
1938	1976	2069			
1951	1983	2103			

Map updated as of July 29, 2024



**Inset Map: Downtown Area**

