



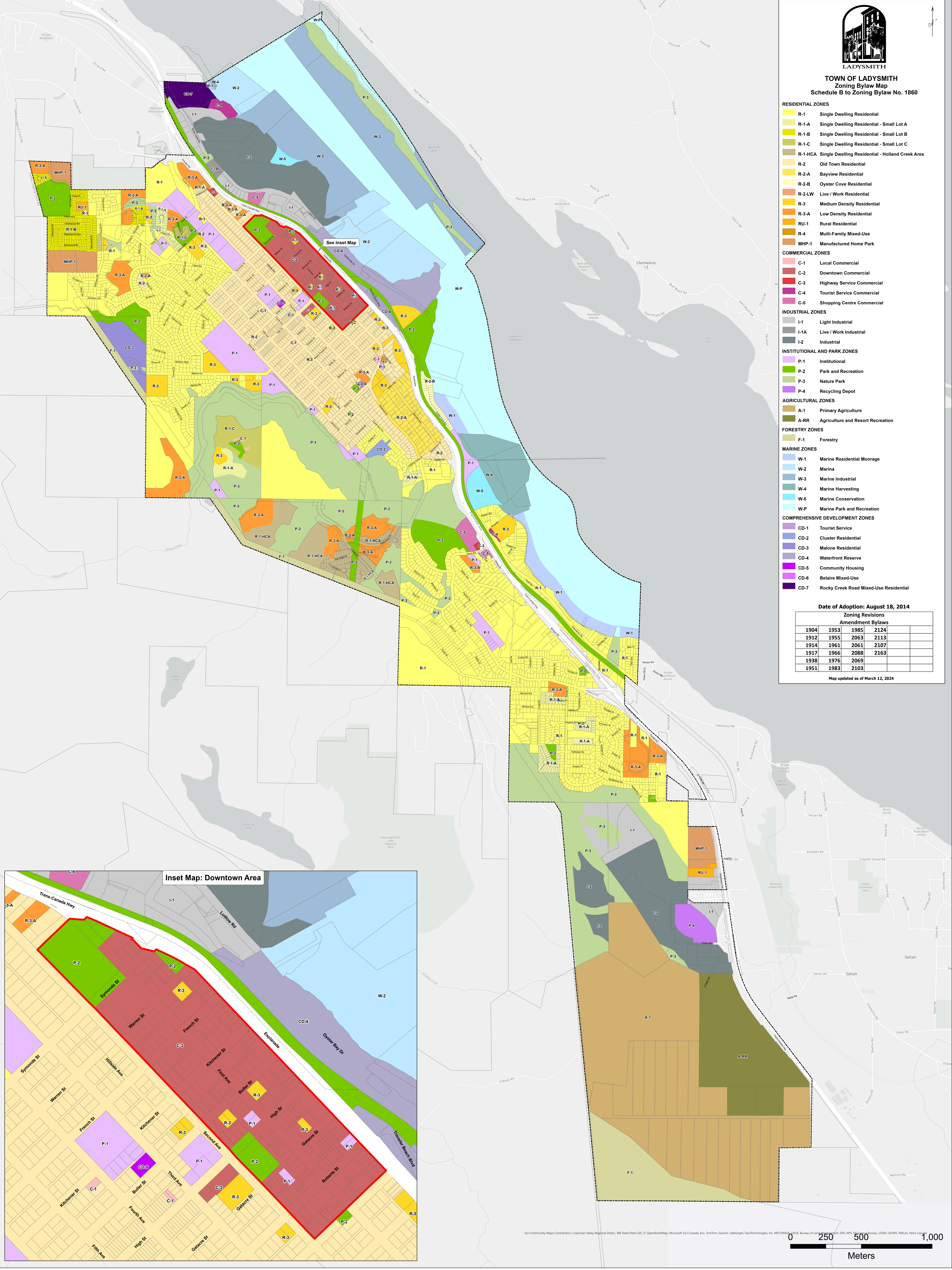
**TOWN OF LADYSMITH**  
Zoning Bylaw Map  
Schedule B to Zoning Bylaw No. 1860

- RESIDENTIAL ZONES**
- R-1 Single Dwelling Residential
  - R-1-A Single Dwelling Residential - Small Lot A
  - R-1-B Single Dwelling Residential - Small Lot B
  - R-1-C Single Dwelling Residential - Small Lot C
  - R-1-HCA Single Dwelling Residential - Holland Creek Area
  - R-2 Old Town Residential
  - R-2-A Bayview Residential
  - R-2-B Oyster Cove Residential
  - R-2-LW Live / Work Residential
  - R-3 Medium Density Residential
  - R-3-A Low Density Residential
  - RU-1 Rural Residential
  - R-4 Multi-Family Mixed-Use
  - MHP-1 Manufactured Home Park
- COMMERCIAL ZONES**
- C-1 Local Commercial
  - C-2 Downtown Commercial
  - C-3 Highway Service Commercial
  - C-4 Tourist Service Commercial
  - C-5 Shopping Centre Commercial
- INDUSTRIAL ZONES**
- I-1 Light Industrial
  - I-1A Live / Work Industrial
  - I-2 Industrial
- INSTITUTIONAL AND PARK ZONES**
- P-1 Institutional
  - P-2 Park and Recreation
  - P-3 Nature Park
  - P-4 Recycling Depot
- AGRICULTURAL ZONES**
- A-1 Primary Agriculture
  - A-RR Agriculture and Resort Recreation
- FORESTRY ZONES**
- F-1 Forestry
- MARINE ZONES**
- W-1 Marine Residential Moorage
  - W-2 Marina
  - W-3 Marine Industrial
  - W-4 Marine Harvesting
  - W-5 Marine Conservation
  - W-P Marine Park and Recreation
- COMPREHENSIVE DEVELOPMENT ZONES**
- CD-1 Tourist Service
  - CD-2 Cluster Residential
  - CD-3 Malone Residential
  - CD-4 Waterfront Reserve
  - CD-5 Community Housing
  - CD-6 Belaire Mixed-Use
  - CD-7 Rocky Creek Road Mixed-Use Residential

Date of Adoption: August 18, 2014

Zoning Revisions				
Amendment Bylaws				
1904	1953	1985	2124	
1912	1955	2063	2113	
1914	1961	2061	2107	
1917	1966	2088	2163	
1938	1976	2069		
1951	1983	2103		

Map updated as of March 12, 2024



Inset Map: Downtown Area

